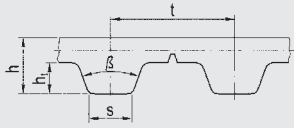
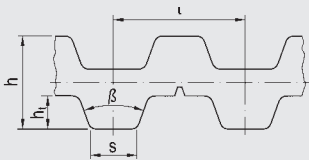


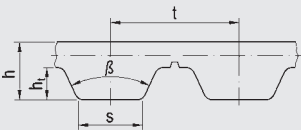
PROFILES



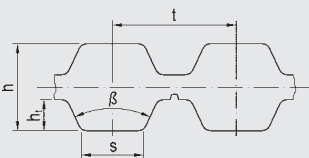
H, T5, T10, T20



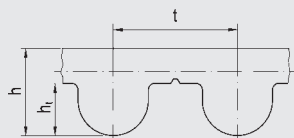
DT5, DT10



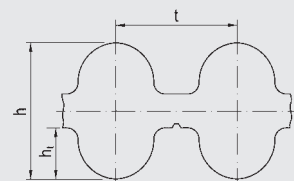
AT5, AT10, AT20



DAT5, DAT10



5M, 8M, 14M



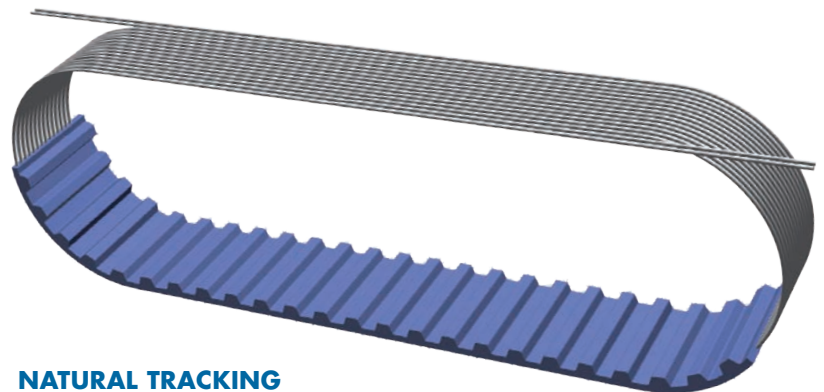
D5M, D8M



ALPHA FLEX

ENDLESS, EXTRUDED POLYURETHANE TIMING BELTS

- 1,100 mm to 22,000 mm length range
- Length range producible in separation stages
- Production widths 100 mm or 150 mm
- Optional with polyamide fabric on the teeth from a length of 1,500 mm
- Optional direct weld on cleats and V-guides
- Optional high-flex or stainless steel tension cords
- Available with S+Z cord twist
- Available in profiles: H, T5, T10, T20, AT5, AT10, AT20, 5M, 8M, 14M
- Double-toothed version available for profiles: DT5, DT10, DAT5, DAT10, D5M, D8M



NATURAL TRACKING

ALPHA FLEX is manufactured with counter wound cords. This means for every cord with a right-to-left "S" twist, there is a counterbalancing left-to-right "Z" twist cord. OPTIBELT's method eliminates any pull bias for the truest running belts in the industry.