

Description	Number of teeth	Type	Material	D <sub>p</sub> (mm)	D <sub>o</sub> (mm)	D <sub>f</sub> (mm)	F (mm)	S (mm)	R (mm)	D <sub>m</sub> (mm)	D <sub>i</sub> (mm)	Taper bushing	Weight without bushing (=kg)
<b>8M - Pitch 8 mm for belt width 20 mm</b>													
TB 22 8M 20	22	5F	ST	56.02	54.65	60	28	22	6	-	37	1008	0.240
TB 24 8M 20	24	5F	ST	61.12	59.75	66	28	22	6	-	44	1108	0.300
TB 26 8M 20	26	5F	ST	66.21	64.84	70	28	22	6	-	45	1108	0.360
TB 28 8M 20	28	5F	ST	71.30	70.08	75	28	22	6	-	50	1108	0.440
TB 30 8M 20	30	5F	ST	76.39	75.13	83	28	22	6	-	58	1108	0.530
TB 32 8M 20	32	5F	ST	81.49	80.16	87	28	25	3	-	63	1610	0.420
TB 34 8M 20	34	5F	ST	86.58	85.22	91	28	25	3	-	64	1610	0.550
TB 36 8M 20	36	5F	ST	91.67	90.30	97	28	25	3	-	68	1610	0.680
TB 38 8M 20	38	5F	ST	96.77	95.39	102	28	25	3	-	72	1610	0.800
TB 40 8M 20	40	5F	ST	101.86	100.49	106	28	25	3	-	76	1610	1.000
TB 44 8M 20	44	8F	ST	112.05	110.67	120	28	32	4	93	-	2012	1.200
TB 48 8M 20	48	8F	ST	122.23	120.86	128	28	32	4	96	-	2012	1.600
TB 56 8M 20	56	8F	ST	142.60	141.23	150	28	32	4	110	-	2012	2.400
TB 64 8M 20	64	8WF	ST	162.97	161.60	168	28	32	4	110	137	2012	2.700
TB 72 8M 20	72	8WF	ST	183.35	181.97	192	28	32	4	110	158	2012	3.300
TB 80 8M 20	80	8W	GG	203.72	202.35	-	28	32	4	110	180	2012	3.500
TB 90 8M 20	90	8A	GG	229.18	227.81	-	28	32	4	110	204	2012	3.650
<b>8M - Pitch 8 mm for belt width 30 mm</b>													
TB 22 8M 30	22	5F	ST	56.02	54.65	60	38	22	16	-	37	1008	0.290
TB 24 8M 30	24	5F	ST	61.12	59.75	66	38	22	16	-	44	1108	0.380
TB 26 8M 30	26	5F	ST	66.21	64.84	70	38	22	16	-	44	1108	0.450
TB 28 8M 30	28	5F	ST	71.30	70.08	75	38	25	13	-	50	1210	0.500
TB 30 8M 30	30	3F	ST	76.39	75.13	83	38	38	-	-	-	1615	0.450
TB 32 8M 30	32	3F	ST	81.49	80.16	87	38	38	-	-	-	1615	0.590
TB 34 8M 30	34	3F	ST	86.58	85.22	91	38	38	-	-	-	1615	0.770
TB 36 8M 30	36	3F	ST	91.67	90.30	97	38	38	-	-	-	1615	0.960
TB 38 8M 30	38	3F	ST	96.77	95.39	102	38	38	-	-	-	1615	1.150
TB 40 8M 30	40	3F	ST	101.86	100.49	106	38	38	-	-	-	1615	1.340
TB 44 8M 30	44	4F	ST	112.05	110.67	120	38	32	3	-	86	2012	1.330
TB 48 8M 30	48	4F	ST	122.23	120.86	128	38	32	3	-	90	2012	1.780
TB 56 8M 30	56	4F	ST	142.60	141.23	150	38	32	3	-	110	2012	3.760
TB 64 8M 30	64	8F	ST	162.97	161.60	168	38	45	7	125	-	2517	4.200
TB 72 8M 30	72	8WF	ST	183.35	181.97	192	38	45	7	125	158	2517	4.300
TB 80 8M 30	80	8W	GG	203.72	202.35	-	38	45	7	125	180	2517	4.600
TB 90 8M 30	90	8A	GG	229.18	227.81	-	38	45	7	125	204	2517	5.000
TB 112 8M 30	112	8A	GG	285.21	283.83	-	38	45	7	125	254	2517	6.200
TB 144 8M 30	144	8A	GG	366.69	365.32	-	38	45	7	125	336	2517	9.000

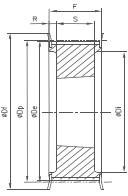
optibelt **ZRS** HTD Pulleys for Taper Bushings  
Profile 8M



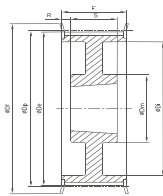
Description	Number of teeth	Type	Material	D <sub>p</sub> (mm)	D <sub>e</sub> (mm)	D <sub>f</sub> (mm)	F (mm)	S (mm)	R (mm)	D <sub>m</sub> (mm)	D <sub>i</sub> (mm)	Taper bushing	Weight without bushing (=kg)
8M - Pitch 8 mm for belt width 50 mm													
TB 28 8M 50	28	4F	ST	71.30	70.08	75	60	25	17.5	-	50	1210	0.600
TB 30 8M 50	30	5F	ST	76.39	75.13	83	60	38	22	-	58	1615	0.650
TB 32 8M 50	32	5F	ST	81.49	80.16	87	60	38	22	-	62	1615	0.820
TB 34 8M 50	34	5F	ST	86.58	85.22	91	60	38	22	-	65	1615	1.060
TB 36 8M 50	36	5F	ST	91.67	90.30	97	60	38	22	-	68	1615	1.300
TB 38 8M 50	38	5F	ST	96.77	95.39	102	60	38	22	-	72	1615	1.600
TB 40 8M 50	40	4F	ST	101.86	100.49	106	60	32	14	-	82	2012	1.710
TB 44 8M 50	44	4F	ST	112.05	110.67	120	60	32	14	-	91	2012	1.780
TB 48 8M 50	48	4F	ST	122.23	120.86	128	60	32	14	-	95	2012	2.300
TB 56 8M 50	56	4F	ST	142.60	141.23	150	60	45	7.5	-	116	2517	3.400
TB 64 8M 50	64	4F	ST	162.97	161.60	168	60	45	7.5	-	137	2517	5.000
TB 72 8M 50	72	9WF	ST	183.35	181.97	192	60	45	7.5	125	158	2517	6.700
TB 80 8M 50	80	4	GG	203.72	202.35	-	60	51	4.5	-	180	3020	8.800
TB 90 8M 50	90	9W	GG	229.18	227.81	-	60	51	4.5	170	204	3020	10.000
TB 112 8M 50	112	9W	GG	285.21	283.83	-	60	51	4.5	170	260	3020	12.000
TB 144 8M 50	144	9A	GG	366.69	365.32	-	60	51	4.5	170	341	3020	15.200
TB 168 8M 50	168	7A	GG	427.81	426.44	-	60	65	2.5	198	395	3525	16.400
TB 192 8M 50	192	7A	GG	488.92	487.55	-	60	65	2.5	198	455	3525	21.800
8M - Pitch 8 mm for belt width 85 mm													
TB 34 8M 85	34	4F	ST	86.58	85.22	91	95	38	28.5	-	65	1615	1.430
TB 36 8M 85	36	4F	ST	91.67	90.30	97	95	38	28.5	-	68	1615	1.870
TB 38 8M 85	38	4F	ST	96.77	95.39	102	95	38	28.5	-	72	1615	2.200
TB 40 8M 85	40	4F	ST	101.86	100.49	106	95	32	31.5	-	82	2012	1.780
TB 44 8M 85	44	4F	ST	112.05	110.67	120	95	32	31.5	-	91	2012	2.300
TB 48 8M 85	48	4F	ST	122.23	120.86	128	95	45	25	-	100	2517	2.660
TB 56 8M 85	56	4F	ST	142.60	141.23	150	95	45	25	-	117	2517	4.450
TB 64 8M 85	64	4F	ST	162.97	161.60	168	95	45	25	-	137	2517	6.200
TB 72 8M 85	72	4F	ST	183.35	181.97	192	95	51	22	-	158	3020	8.000
TB 80 8M 85	80	4	GG	203.72	202.35	-	95	51	22	-	180	3020	10.000
TB 90 8M 85	90	9W	GG	229.18	227.81	-	95	51	22	170	204	3020	10.800
TB 112 8M 85	112	9W	GG	285.21	283.83	-	95	51	22	170	260	3020	15.000
TB 144 8M 85	144	9A	GG	366.69	365.32	-	95	65	15	198	336	3525	20.000
TB 168 8M 85	168	9A	GG	427.81	426.44	-	95	65	15	198	395	3525	23.000
TB 192 8M 85	192	9A	GG	488.92	487.55	-	95	65	15	198	455	3525	28.500

Taper bushing	1008	1108	1210	1610	1615	2012	2517	3020	3525
Bore d <sub>2</sub> (mm) from... to...	10-25	10-28	11-32	14-42	14-42	14-50	16-65	25-75	35-90

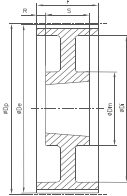
GG = Cast iron ST = Steel We reserve the right to make technical changes. \* Non stock items.



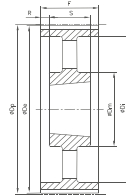
Ausf. 4F



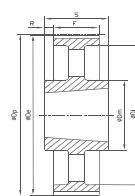
Ausf. 9WF



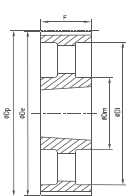
Ausf. 9W



Ausf. 9A



Ausf. 7A



Ausf. 3A

Description	Number of teeth	Type	Material	D <sub>p</sub> (mm)	D <sub>e</sub> (mm)	D <sub>f</sub> (mm)	F (mm)	S (mm)	R (mm)	D <sub>m</sub> (mm)	D <sub>i</sub> (mm)	Taper bushing	Weight without bushing (≈kg)
<b>14M - Pitch 14 mm for belt width 40 mm</b>													
TB 28 14M 40	28	4F	ST	124.78	122.12	128	54	32	11	-	94	2012	2.000
TB 29 14M 40	29	4F	ST	129.23	126.57	138	54	32	11	-	98	2012	2.380
TB 30 14M 40	30	4F	ST	133.69	130.99	138	54	32	11	-	98	2012	2.650
TB 32 14M 40	32	4F	ST	142.60	139.88	154	54	32	11	-	108	2012	3.400
TB 34 14M 40	34	4F	ST	151.52	148.79	160	54	45	4.5	-	110	2517	3.870
TB 36 14M 40	36	4F	ST	160.43	157.68	168	54	45	4.5	-	120	2517	4.800
TB 38 14M 40	38	4F	ST	169.34	166.60	183	54	45	4.5	-	130	2517	5.400
TB 40 14M 40	40	4F	ST	178.25	175.49	188	54	45	4.5	-	138	2517	6.000
TB 44 14M 40	44	4F	ST	196.08	193.28	211	54	51	1.5	-	155	3020	7.800
TB 48 14M 40	48	4F	ST	213.90	211.11	226	54	51	1.5	-	170	3020	9.400
TB 56 14M 40	56	9WF	ST	249.55	246.76	256	54	51	1.5	170	208	3020	10.800
TB 64 14M 40	64	9WF	GG	285.21	282.41	296	54	51	1.5	170	240	3020	13.400
TB 72 14M 40	72	9W	GG	320.86	318.06	-	54	51	1.5	170	280	3020	15.200
TB 80 14M 40	80	9A	GG	356.51	353.71	-	54	51	1.5	170	315	3020	16.000
TB 90 14M 40	90	9A	GG	401.07	398.28	-	54	51	1.5	170	360	3020	17.800
TB 112 14M 40	112	9A	GG	499.11	496.32	-	54	51	1.5	170	457	3020	25.600
TB 144 14M 40	144	9A	GG	641.71	638.92	-	54	51	1.5	170	600	3020	32.000
TB 168 14M 40	168	9A	GG	748.66	745.87	-	54	51	1.5	170	706	3020	44.000
TB 192 14M 40	192	9A	GG	855.62	852.82	-	54	51	1.5	170	813	3020	49.000
TB 216 14M 40	216	9A	GG	962.57	959.77	-	54	51	1.5	170	920	3020	55.000
<b>14M - Pitch 14 mm for belt width 55 mm</b>													
TB 28 14M 55	28	4F	ST	124.78	122.12	128	70	32	19	-	98	2012	2.200
TB 29 14M 55	29	4F	ST	129.23	126.57	138	70	32	19	-	100	2517	2.740
TB 30 14M 55	30	4F	ST	133.69	130.99	138	70	45	12.5	-	100	2517	2.700
TB 32 14M 55	32	4F	ST	142.60	139.88	154	70	45	12.5	-	108	2517	3.660
TB 34 14M 55	34	4F	ST	151.52	148.79	160	70	45	12.5	-	110	2517	4.550
TB 36 14M 55	36	4F	ST	160.43	157.68	168	70	45	12.5	-	120	2517	5.200
TB 38 14M 55	38	4F	ST	169.34	166.60	183	70	45	12.5	-	130	2517	6.200
TB 40 14M 55	40	4F	ST	178.25	175.49	188	70	45	12.5	-	138	2517	7.000
TB 44 14M 55	44	4F	ST	196.08	193.28	211	70	51	9.5	-	155	3020	8.600
TB 48 14M 55	48	4F	ST	213.90	211.11	226	70	51	9.5	-	170	3020	10.400
TB 56 14M 55	56	9WF	ST	249.55	246.76	256	70	51	9.5	170	208	3020	12.000
TB 64 14M 55	64	9WF	GG	285.21	282.41	296	70	51	9.5	170	242	3020	14.500
TB 72 14M 55	72	9W	GG	320.86	318.06	-	70	51	9.5	170	280	3020	16.200
TB 80 14M 55	80	9A	GG	356.51	353.71	-	70	51	9.5	170	315	3020	17.500
TB 90 14M 55	90	9A	GG	401.07	398.28	-	70	51	9.5	170	360	3020	20.100
TB 112 14M 55	112	9A	GG	499.11	496.32	-	70	51	9.5	170	457	3020	28.400
TB 144 14M 55	144	9A	GG	641.71	638.92	-	70	51	9.5	170	600	3020	36.200
TB 168 14M 55	168	9A	GG	748.66	745.87	-	70	51	9.5	170	706	3020	49.000
TB 192 14M 55	192	9A	GG	855.62	852.82	-	70	51	9.5	170	813	3020	53.000
TB 216 14M 55	216	7A	GG	962.57	959.76	-	70	89	9.5	190	920	3535	65.800
<b>14M - Pitch 14 mm for belt width 85 mm</b>													
TB 28 14M 85	28	4F	GG	127.0	102.0	102.0	45	-	28.5	-	98	2517	2.700

**optibelt ZRS HTD Pulleys for Taper Bushings**  
**Profile 14M**



Description	Number of teeth	Type	Material	D <sub>p</sub> (mm)	D <sub>e</sub> (me)	D <sub>f</sub> (mm)	F (mm)	S (mm)	R (mm)	D <sub>m</sub> (mm)	D <sub>i</sub> (mm)	Taper bushing	Weight without bushing (=kg)
TB 29 14M 85	29	4F	ST	129.23	126.57	138	102	45	28.5	-	100	2517	3.400
TB 30 14M 85	30	4F	ST	133.69	130.99	138	102	45	28.5	-	100	2517	3.750
TB 32 14M 85	32	4F	ST	142.60	139.88	154	102	45	28.5	-	108	2517	4.800
TB 34 14M 85	34	4F	ST	151.52	148.79	160	102	45	28.5	-	110	2517	6.000
TB 36 14M 85	36	4F	ST	160.43	157.68	168	102	51	25.5	-	120	3020	5.800
TB 38 14M 85	38	4F	ST	169.34	166.60	183	102	51	25.5	-	130	3020	6.800
TB 40 14M 85	40	4F	ST	178.25	175.49	188	102	51	25.5	-	138	3020	8.000
TB 44 14M 85	44	4F	ST	196.08	193.28	211	102	51	25.5	-	155	3030	11.800
TB 48 14M 85	48	4F	ST	213.90	211.11	226	102	51	25.5	-	170	3030	15.100
TB 56 14M 85	56	4F	ST	249.55	246.76	256	102	65	18.5	-	210	3525	19.000
TB 64 14M 85	64	9WF	GG	285.21	282.41	296	102	65	18.5	190	242	3525	23.000
TB 72 14M 85	72	9W	GG	320.86	318.06	-	102	65	18.5	190	280	3525	25.000
TB 80 14M 85	80	9A	GG	356.51	353.71	-	102	65	18.5	190	315	3525	26.000
TB 90 14M 85	90	9A	GG	401.07	398.28	-	102	65	18.5	190	360	3525	27.800
TB 112 14M 85	112	9A	GG	499.11	496.32	-	102	65	18.5	190	457	3525	36.500
TB 144 14M 85	144	9A	GG	641.71	638.92	-	102	65	18.5	190	600	3525	48.000
TB 168 14M 85	168	9A	GG	748.66	745.87	-	102	65	18.5	190	706	3525	60.000
TB 192 14M 85	192	3A	GG	855.62	852.82	-	102	102	-	190	813	4040	86.000
TB 216 14M 85	216	3A	GG	962.57	959.77	-	102	102	-	190	920	4040	91.500
<b>14M - Pitch 14 mm for belt width 115 mm</b>													
TB 28 14M 115	28	4F	ST	124.78	122.12	128	133	45	44	-	98	2517	3.770
TB 29 14M 115	29	4F	ST	129.23	126.57	138	133	45	44	-	100	2517	4.000
TB 30 14M 115	30	4F	ST	133.69	130.99	138	133	45	44	-	100	2517	5.000
TB 32 14M 115	32	4F	ST	142.60	139.88	154	133	45	44	-	108	2517	6.800
TB 34 14M 115	34	4F	ST	151.52	148.79	160	133	45	44	-	110	2517	6.800
TB 36 14M 115	36	4F	ST	160.43	157.68	168	133	51	41	-	120	3020	7.000
TB 38 14M 115	38	4F	ST	169.34	166.60	183	133	51	41	-	130	3020	8.400
TB 40 14M 115	40	4F	ST	178.25	175.49	188	133	51	41	-	138	3020	9.200
TB 44 14M 115	44	4F	ST	196.08	193.28	211	133	76	28.5	-	155	3030	14.000
TB 48 14M 115	48	4F	ST	213.90	211.11	226	133	76	28.5	-	170	3030	17.100
TB 56 14M 115	56	4F	ST	249.55	246.76	256	133	89	22	-	208	3535	24.800
TB 64 14M 115	64	9WF	GG	285.21	282.41	296	133	89	22	190	240	3535	27.000
TB 72 14M 115	72	9W	GG	320.86	318.06	-	133	89	22	190	280	3535	29.000
TB 80 14M 115	80	9A	GG	356.51	353.71	-	133	89	22	190	315	3535	32.000
TB 90 14M 115	90	9A	GG	401.07	398.28	-	133	89	22	190	360	3535	36.500
TB 112 14M 115	112	9A	GG	499.11	496.32	-	133	89	22	190	457	3535	46.000
TB 144 14M 115	144	9A	GG	641.71	638.92	-	133	102	15.5	230	600	4040	68.000
TB 168 14M 115	168	9A	GG	748.66	745.87	-	133	102	15.5	230	706	4040	82.600
TB 192 14M 115	192	9A	GG	855.62	852.82	-	133	102	15.5	230	813	4040	96.000
TB 216 14M 115	216	9A	GG	962.57	959.76	-	133	102	15.5	230	920	4040	107.000
<b>14M - Pitch 14 mm for belt width 170 mm</b>													
TB 38 14M 170*	38	4F	ST	169.34	166.60	183	187	76	55.5	-	130	3030	11.700
TB 40 14M 170*	40	4F	ST	178.25	175.49	188	187	76	55.5	-	138	3030	13.000
TB 44 14M 170*	44	4F	ST	196.08	193.28	211	187	89	49	-	153	3535	15.000
TB 48 14M 170*	48	4F	ST	213.90	211.11	226	187	89	49	-	170	3535	19.000
TB 56 14M 170*	56	4F	ST	249.55	246.76	256	187	89	49	-	208	3535	28.500
TB 64 14M 170*	64	4F	GG	285.21	282.41	296	187	102	42.5	-	240	4040	41.000
TB 72 14M 170*	72	9W	GG	320.86	318.06	-	187	102	42.5	230	280	4040	46.900
TB 80 14M 170*	80	9W	GG	356.51	353.71	-	187	102	42.5	230	315	4040	48.000
TB 90 14M 170*	90	9A	GG	401.07	398.28	-	187	102	42.5	230	360	4040	52.500

